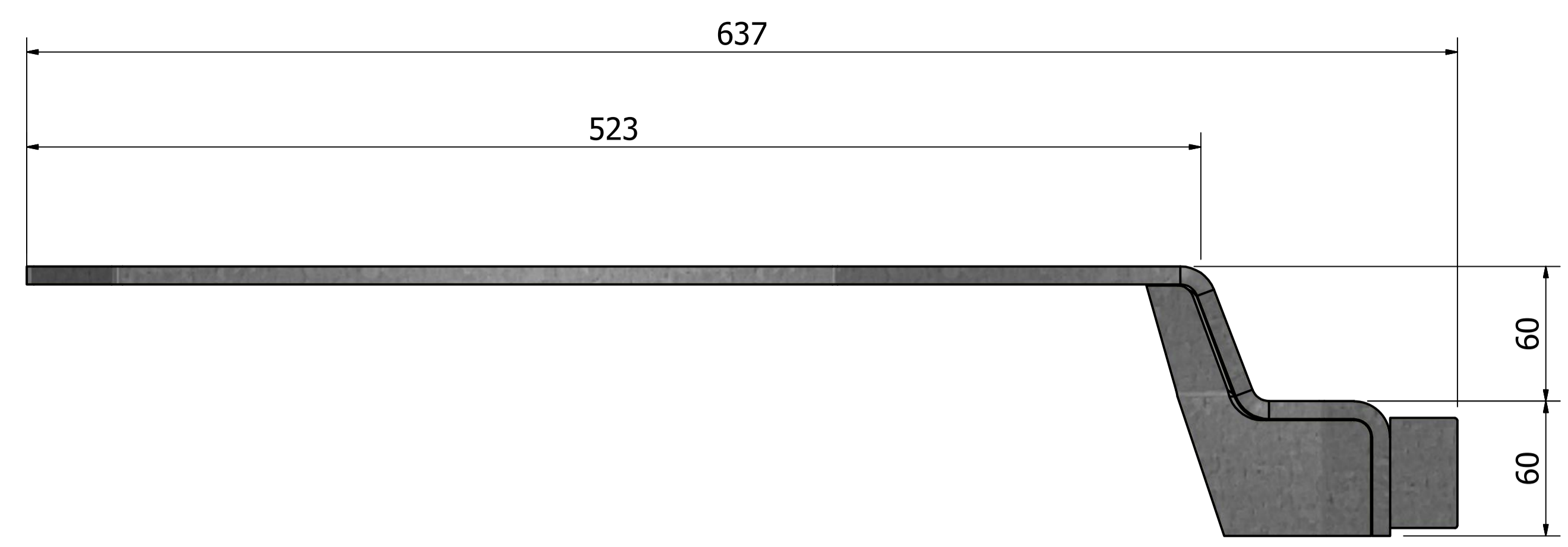
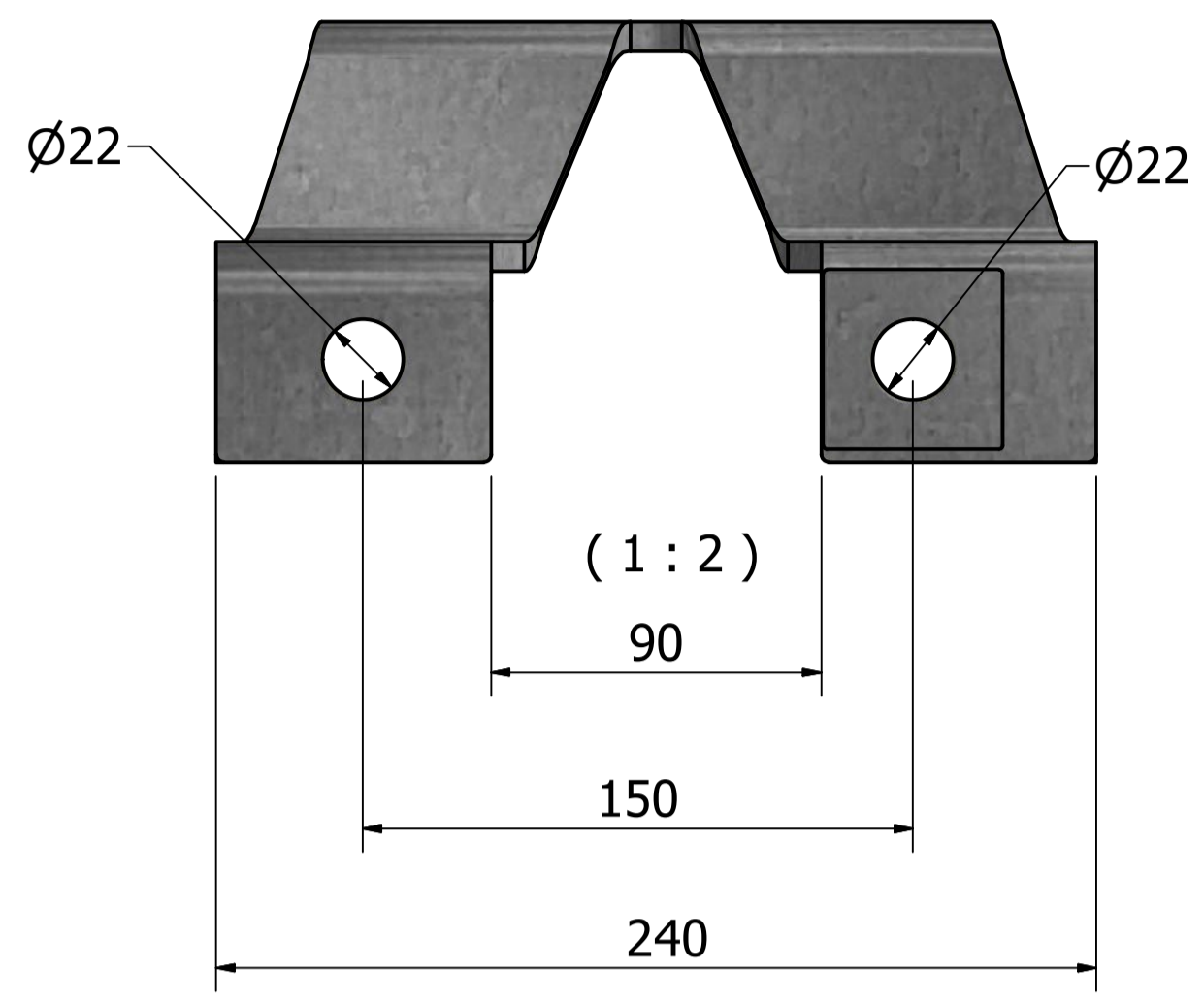


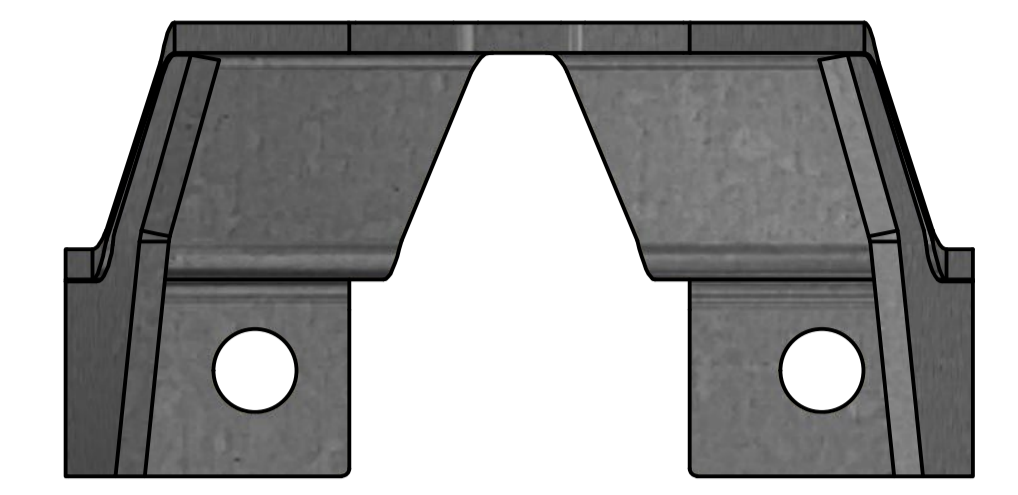
GENERAL NOTE:
 ALL DIMENSIONS ARE GIVEN WITHOUT DEDUCTIONS FOR BEVELING WELD GAP OR ALLOWANCE FOR MACHINING UNLESS NOTED OTHERWISE (U.N.O).
 ALL SHARP EDGES SHALL BE ROUNDED TO A RADIUS OF MIN. 1 MM.
 REMOVE ALL BURRS, WELDSLAG AND SPATTERS.

SURFACE TREATMENT:
 SURFACE PRE AND POST TREATMENT ACCORDING TO FINISHING METHOD.

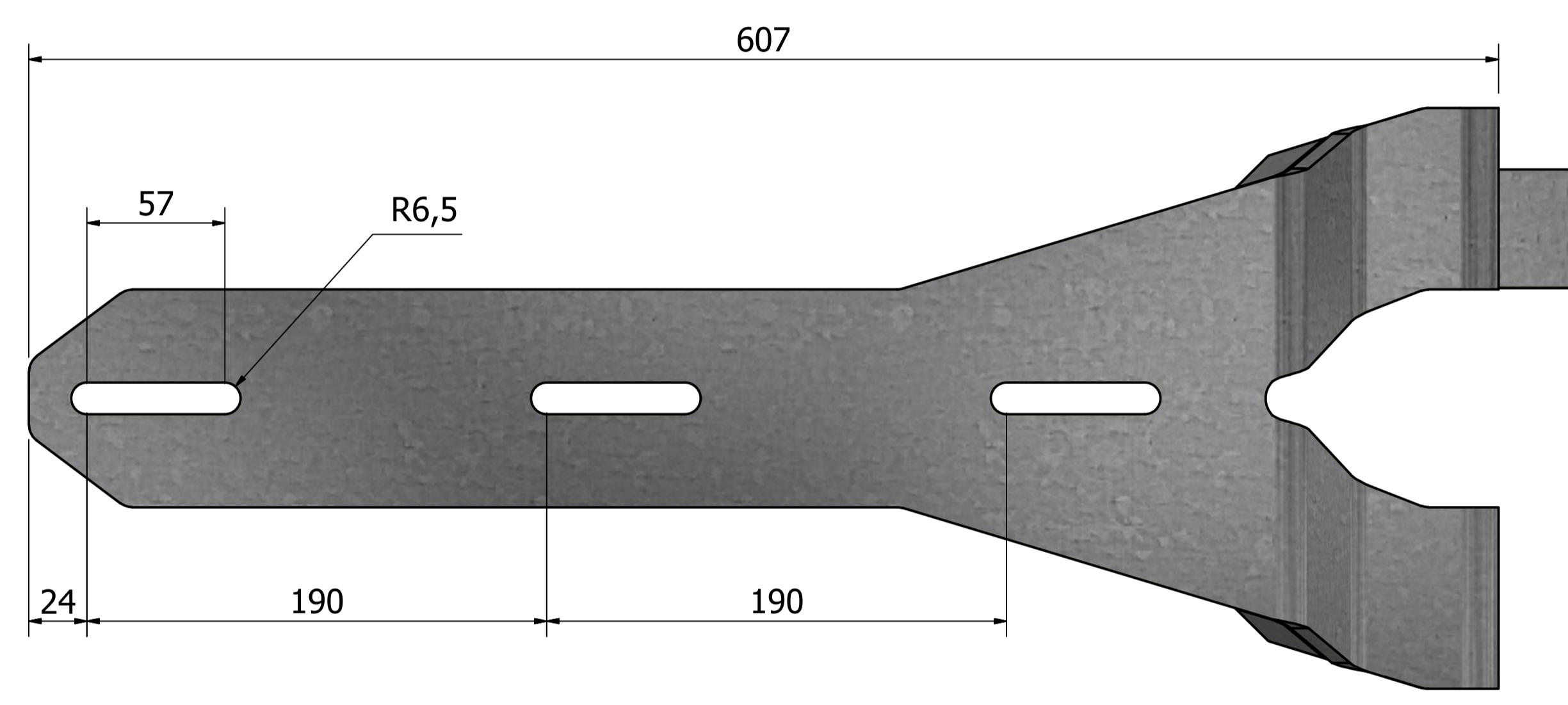
SURFACE FINISHING: GALVANIZED AFTER WELDING



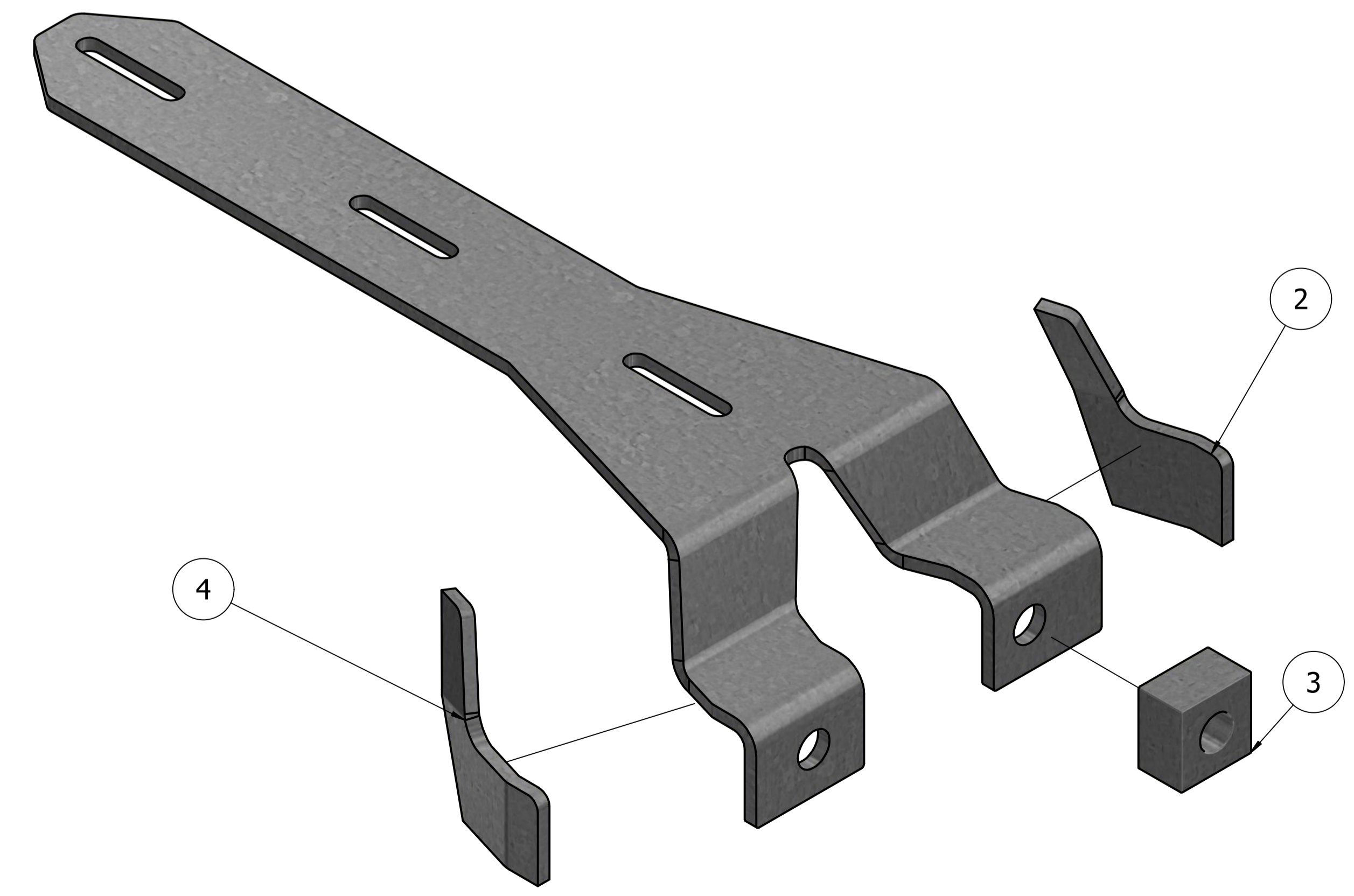
SCANIA LEFT BRACKET (1:2)



(1:2)



(1:2)



SCANIA LEFT BRACKET (1:2)

ITM	QTY	TITLE	DESCRIPTION	MATERIAL	MASS	REV	ITEM NO
4	1	SUPPORT SCANIA BRCK01	FLATP. 8 x 105 x 112	Steel, Mild	0,3 kg	A	8000185
3	1	BOOT	BAR. 30 x 49 x 49	Steel, Mild	0,5 kg	A	8000183
2	1	SUPPORT SCANIA BRCK02	FLATP. 8 x 105 x 112	Steel, Mild	0,3 kg	A	8000184
1	1	LEFT SIDE BRACKET	FLATP. 8 x 240 x 684	Steel, Mild	4,8 kg	A	8000190

DETAIL / MATERIAL LIST						
REV	DESCRIPTION	DATE	DES	CHK	APPR	
A	REISSUED FROM WS DRAWINGS	16.12.2013	BAR	SAS	JEB	

REVISION HISTORY						
Designed by	Projection	Sheet size	Total Weight	Date		
BAR		A1	6 kg	16.12.2013		

autoline as Box 56-9476 Borkenes - Norway Mail: safesand@online.no www.autoline.no TEL: +47-77 09 23 00 Fax: +47-77 09 24 77		MAIN ASSEMBLY AUTOLINE SCANIA LEFT BRACKET	Drawing Number 8000189 Revision : Sheet B 1 / 1
--	--	--	--